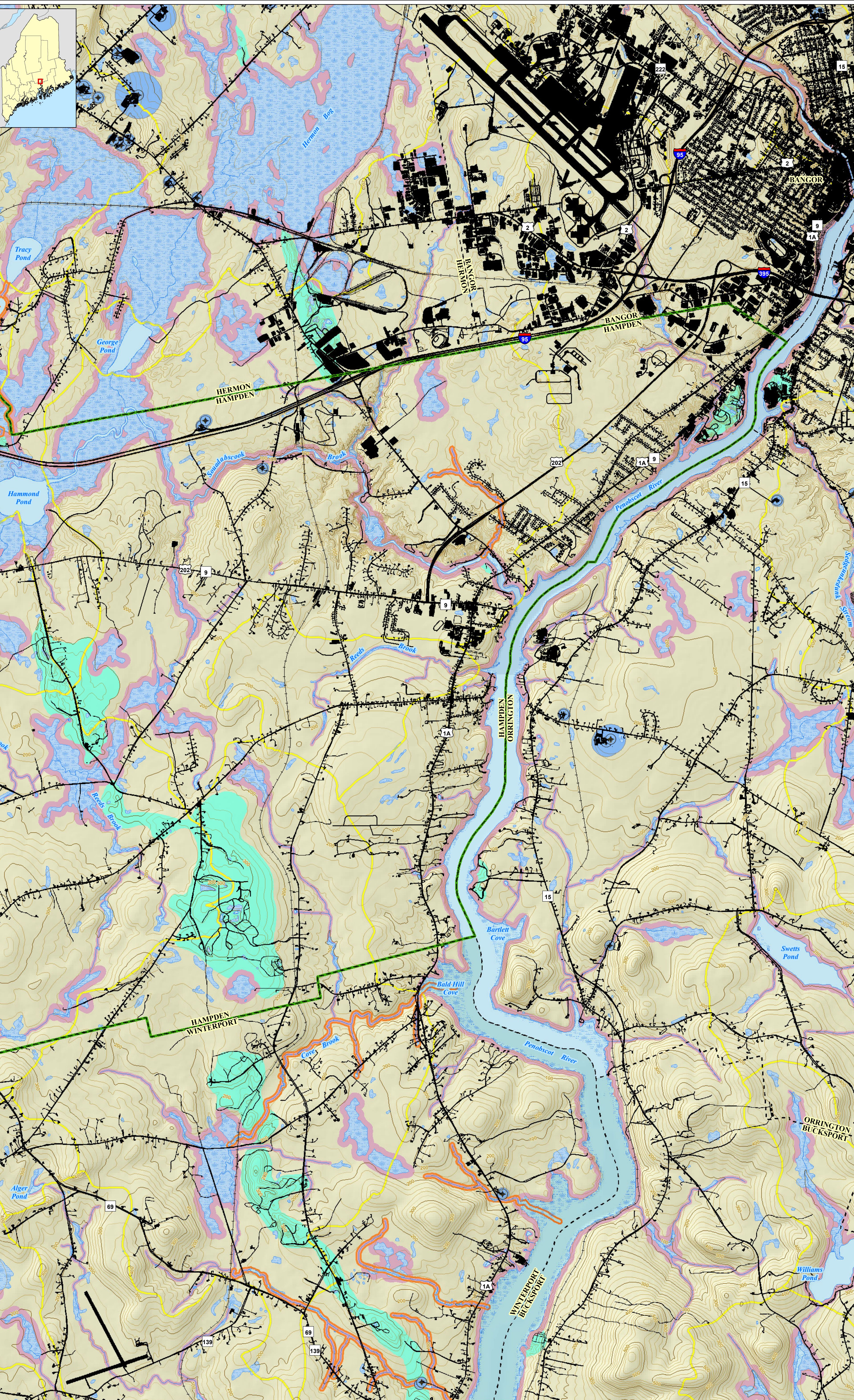


**Beginning with HABITAT**  
 An Approach to Conserving Maine's Natural Space for Plants, Animals, and People  
 www.beginningwithhabitat.org

**Primary Map 1**  
**Water Resources & Riparian Habitats**  
**Hampden**

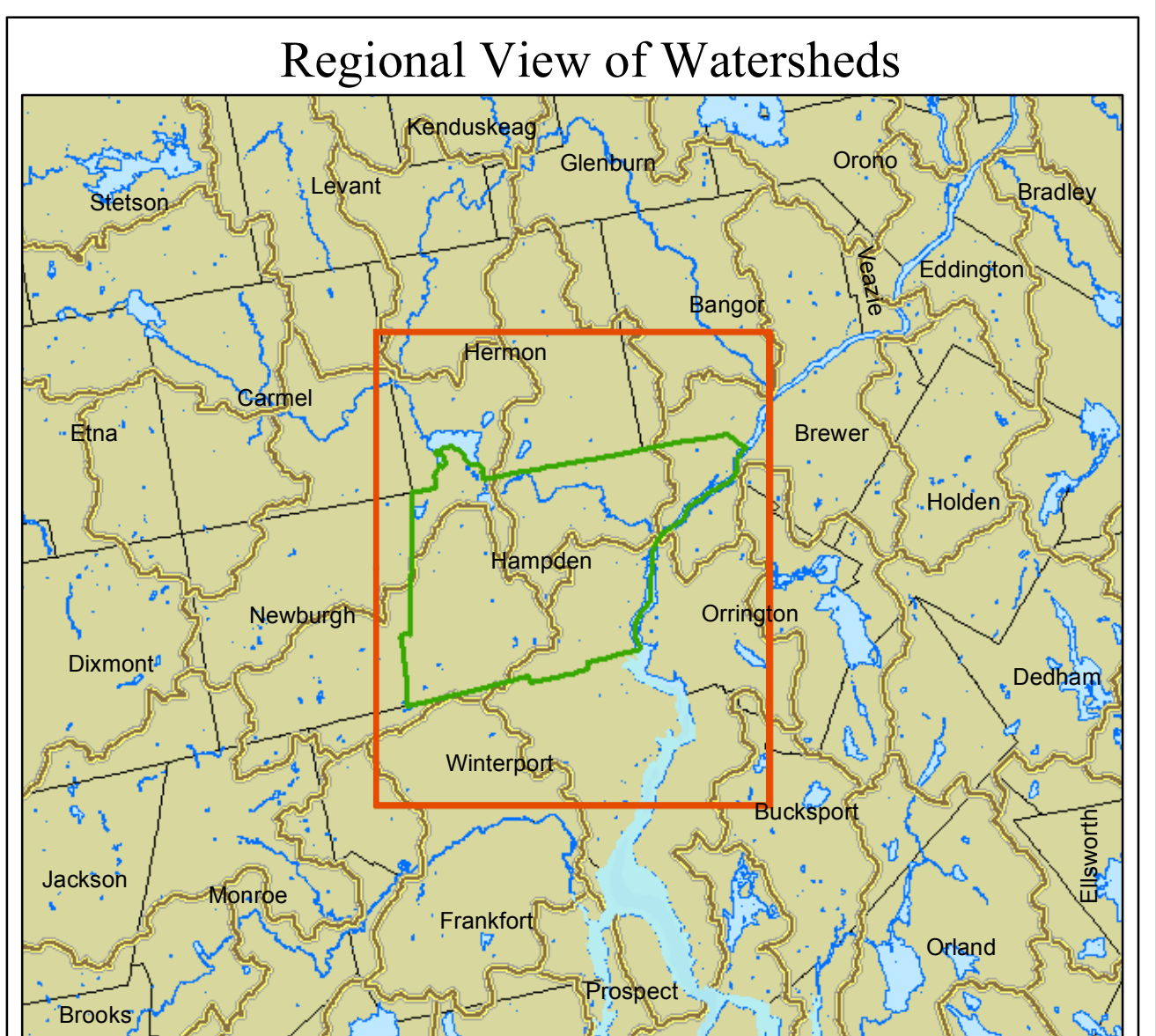
*This map is nonregulatory and is intended for planning purposes only*



### LEGEND

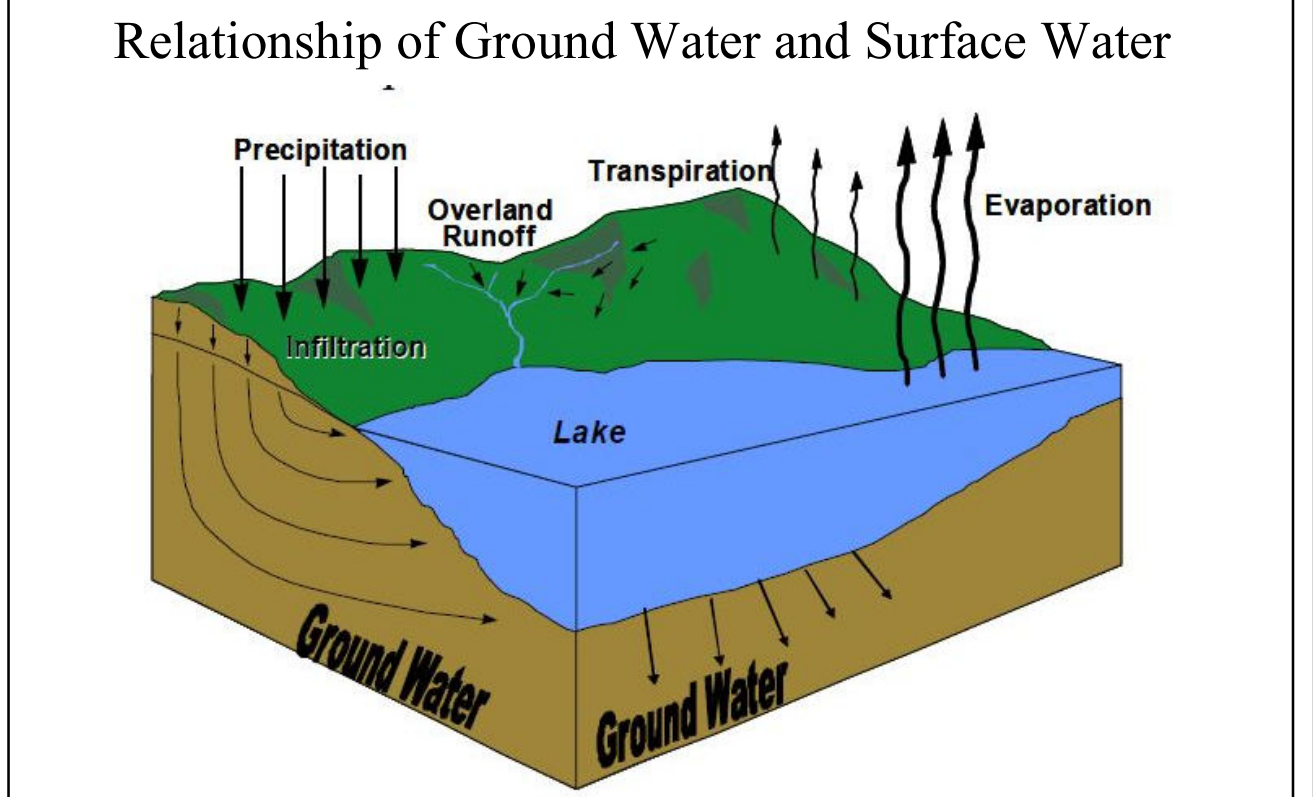
This map depicts riparian areas associated with major surface water features and important public water resources. This map does not depict all streams or wetlands known to occur on the landscape and should not be used as a substitute for on the ground surveys. This map should be used as a planning reference only and is intended to illustrate the natural hydrologic connection between surface water features. Protecting riparian habitats protects water quality, maintains habitat connections, and safeguards important economic resources including recreational and commercial fisheries.

- Selected Town or Area** (Green outline)
- Organized Township Boundary** (Black dashed line)
- Unorganized Township** (Yellow dashed line)
- Developed** - Impervious surfaces including buildings and roads (Black solid line)
- Drainage divides** - These are the smallest hydrologic units mapped in Maine. They contain watershed boundaries for most ponds and rivers in Maine. (Yellow outline)
- NWI Wetlands** - National Wetlands Inventory (NWI) uses aerial photographs to approximate wetland locations. NWI data is not a comprehensive mapping of wetland resources and typically under represents the presence of wetlands on the landscape. The presence of wetlands needs to be determined in the field prior to conducting activities that could result in wetland disturbance. (Blue shading)
- Riparian Habitat** - depicted using common regulatory zones including a 250-foot-wide strip around Great Ponds (ponds >10 acres), rivers, coastline, and wetlands >10 acres and a 75-foot-wide strip around streams. Riparian areas depicted on this map may already be affected by existing land uses. (Pink shading)
- Shellfish Growing Areas** - The Maine Department of Marine Resources maps growing areas for economically important shellfish resources. This map depicts softshell and hard clam resources in order to illustrate the relation of these resources to streams and shoreline areas vital to their conservation. (Orange shading)
- Brook Trout Habitat** - Streams and ponds, buffered to 100 feet, where wild Brook Trout populations have been documented, or managed to enhance local fisheries. (Red hatched pattern)
- Public Water Supply Wells** (Blue circle with dot)
- Source protection area** - Buffers that represent source water protection areas for wells and surface water intakes that serve the public water supply. Their size is proportional to population served and/or the type of water supply system. These buffers range from 300 to 2,500 feet in radius. (Blue circle)
- Aquifers** - flow of at least 10 gallons per minute (Cyan shading)



- Main Map Extent** (Red outline)
- Selected Town or Area** (Green outline)
- Subwatersheds** (Yellow outline)

1 inch = 4 miles



### Shoreland Zoning

Maine's Mandatory Shoreland Zoning Act is intended to protect water quality, conserve wildlife habitat, and preserve the natural beauty of Maine's shoreline areas. Successful implementation requires local awareness of and appreciation for surface water resources and effective enforcement of setback and buffer requirements.

At a minimum, Maine's shoreland zones include all land within:

- 250 feet of the high-water line of any pond over 10 acres, any river that drains at least 25 square miles, and all tidal waters and saltwater marshes;
- 250 feet of a freshwater wetland over 10 acres (except "forested" wetlands); and
- 75 feet of a stream that is either an outlet stream of a great pond, or located below the confluence of two perennial streams as depicted on a USGS topographic map.

Shoreland zoning encourages towns to provide greater protection to their local water resources by applying shoreland zone protections to additional resource types such as smaller streams and wetlands, and rare terrestrial features. For specific guidance regarding Maine's Mandatory Shoreland Zoning Act contact the Dept. of Environmental Protection Shoreland Zoning Unit: 207-287-3901 (Augusta), 207-822-6300 (Portland), 207-941-4116 (Bangor). [www.maine.gov/dep/blw/docstand/szpage.htm](http://www.maine.gov/dep/blw/docstand/szpage.htm)

### Data Sources

**DATA SOURCE INFORMATION**

TOWNSHIP BOUNDARIES Maine Office of GIS (2013); metwp24	ROADS Maine Office of GIS, Maine Department of Transportation (2015); medotpub	HYDROLOGY USGS National Hydrography Dataset (NHD) (2012)	DEVELOPED Maine Office of GIS, Maine Department of Inland Fisheries and Wildlife (2015); empowrise_change_2015	NATIONAL WETLANDS INVENTORY U.S. Fish & Wildlife Service (2015); NWI	SHELLFISH Maine Department of Marine Resources; softshell_claims_hard_clams	RIPARIAN BUFFERS Maine Office of GIS, Maine Natural Areas Program (2011)	WELLS, WELL BUFFERS Maine Office of GIS, Maine Department of Human Services-Drinking Water Program (2011); wells_wellbuf	AQUIFERS Maine Office of GIS, Maine Geological Survey (2011); aquifer_polygons	DRAINAGE DIVIDES Maine Office of GIS (1994); medrwd	BROOK TROUT HABITAT Maine Department of Inland Fisheries & Wildlife (2011)
--	---	---	---	---	--	---	---	---	--	---

**DATA SOURCE CONTACT INFORMATION**

Maine Office of GIS: <http://www.maine.gov/mgis/>  
 Maine Natural Areas Program: <http://www.maine.gov/dac/mnap/index.html>  
 Maine Department of Marine Resources: <http://www.maine.gov/dmr/>  
 Maine Department of Transportation: <http://www.maine.gov/dot/>  
 Maine Geological Survey: <http://www.maine.gov/doehrm/mgs/mgs.htm>  
 Maine Department of Inland Fisheries & Wildlife: <http://www.maine.gov/wildlife/index.html>

**DIGITAL DATA REQUEST**  
 To request digital data for a town or organization, please visit our website: [http://www.beginningwithhabitat.org/the\\_maps/gis\\_data\\_request.html](http://www.beginningwithhabitat.org/the_maps/gis_data_request.html)